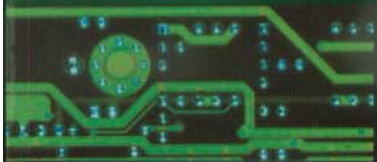


Modular DSP

Validator

Münzprüfer

Selécteur



AZKOYEN MEDIOS DE PAGO, S.A.



Modular DSP



MODULAR RANGE

- Standard Sensing Module DSP for the whole range.
- Compatible Interface Modules for every requirement.
- Compatible Formats with previous models.
- Different levels of Sensing Module to meet the most demanding requirements.
- 100% modular construction.

Digital Sensing Processor (DSP)

TECHNOLOGY, PERFORMANCE:

Autonomy and flexibility.

- Ability to program different validators with a single file.
- Advanced flash technology for the sensor and output modules.
- Download new software via the Internet.
- 2 token programming.

Security. The best guarantee against fraudulent coins

- 1 or 2 pairs of inductive sensors, 3 optical sensors and 1 sound sensor.
- Better sensing not being affected by temperature changes or ageing.
- Robust and efficient serial anti-string system.

TECHNICAL DETAILS

Coins accepted

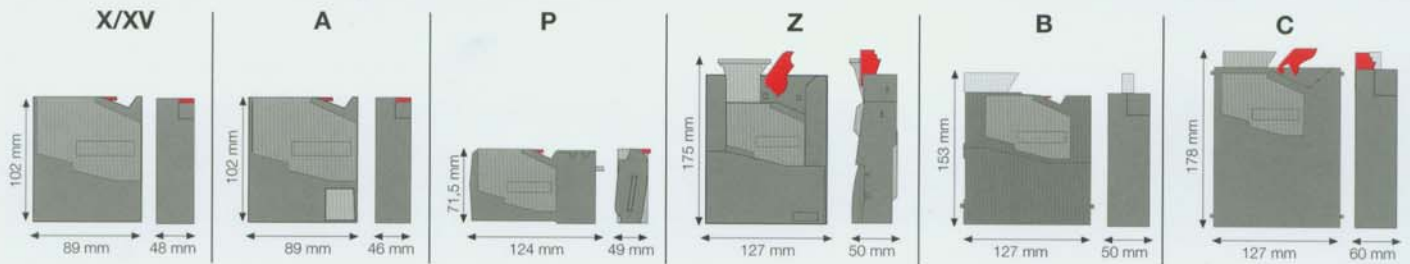
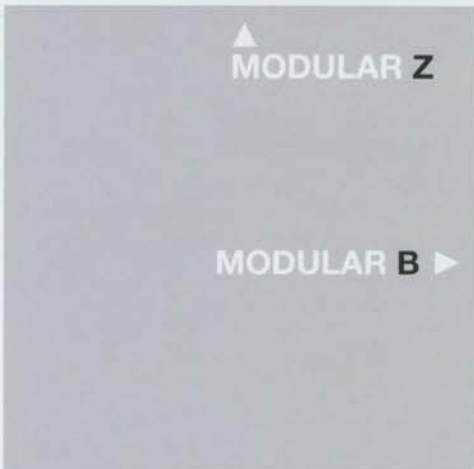
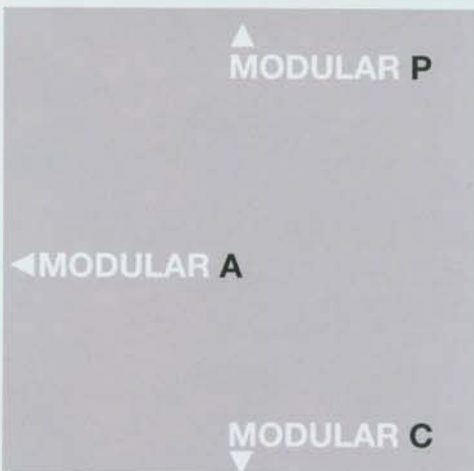
| | |
|----------------|-----------------------------|
| Coin diameter | 16.25mm- 32.5mm |
| Coin thickness | 1.2mm-3.3mm |
| Accepted coins | 32 different types of coins |

Operating conditions

| | |
|---------------------|--|
| Working temperature | +5° to +55°C |
| Humidity | 95% relative humidity without condensation |
| Storage temperature | -25° to +70°C |

AZKOYEN MEDIOS DE PAGO, S.A.

Modular DPS



Modular DSP

| | | | X | XV | A | P | Z | B | C |
|---------------------|----------------------------|------------------------------|-----------|---------|---------|---------|------------|------------|------------------|
| | | | | | | | | | |
| Coin control | Münzverwaltung | Gestion de pièces | | | | | | | |
| Coin input | Münzeinwurf | Entrée de pièces | | | | | | | |
| Accepted coin path | Ausgang akzeptierte Münzen | Sortie acceptée | | | | | | | |
| Rejected coin path | Ausgang abgewiesene Münzen | Sortie refusée | | | | | | | |
| Recovery operation | Betrieb Rückgabe | Actionnement du récupérateur | | | | | | | |
| Anti-string | Antifadenkennung | Anti-fill | • | • | • | • | • | • | • |
| Sensing | Sensorik | Détection | | | | | | | |
| Ferrite pairs | Spulenpaare | Paires de ferrites | 1, 2, 3 | 1, 2, 3 | 1, 2, 3 | 1, 2, 3 | 1, 2, 3 | 1, 2, 3 | 1, 2, 3 |
| Microphone | Klangsensor | Microphone | • | • | • | • | • | • | • |
| Protocols | Protokolle | Protocoles | | | | | | | |
| Parallel | Parallel | Parallèle | • | • | • | • | • | • | |
| Timer | Timer | Temporisateur | • | • | • | | | | |
| Stepper | Stepper | Stepper | | • | • | | | | |
| Credits | Guthaben | Crédits | • | • | • | | | | |
| PS | PS | PS | • | • | • | • | | • | |
| Cctalk | Cctalk | Cctalk | • | • | • | | • | | |
| MDB | MDB | MDB | | | | | | | • |
| BDTA | BDTA | BDTA | | | | | • | | |
| Consumption | Verbrauchsangaben | Consommations | | | | | | | |
| Normal | Normal | Normal | • | • | • | | • | | • |
| Low | Niedrig | Faible | • | • | • | • | • | • | |
| Accessories | Zubehör | Accessoires | | | | | | | |
| Midi front plate | Grosse Blende | Écusson long | | • | • | | | | |
| Mini front plate | Kleine Blende | Écusson court | | • | • | | | | |
| Entry hoppers | Einlauftrichter | Entonnoirs d'entrée | 3 sizes | | | | integrated | integrated | integrated |
| Sorters | Sortierer | Classificateurs | 3 / 5 way | | | | 4 way | | 5 way/integrated |
| Applications | Anwendungen | Applications | | | | | | | |
| Vending | Vending | Distribution Automatique | • | • | • | | • | | • |
| Amusement | Spielautomaten | Récréatif | • | • | • | | • | | • |
| Time control | Zeitsteuerung | Contrôle du temps | • | • | • | | | | |
| Parking, ticketing | Parken, Ticketing | Parking, ticketing. | • | • | • | | • | | • |
| Telephony | Telekommunikation | Téléphonie | • | • | • | • | | • | |